

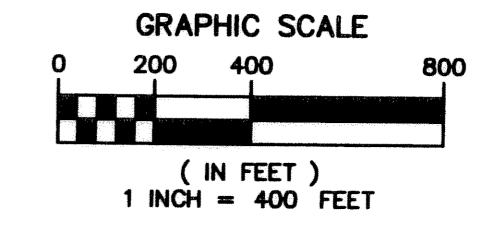
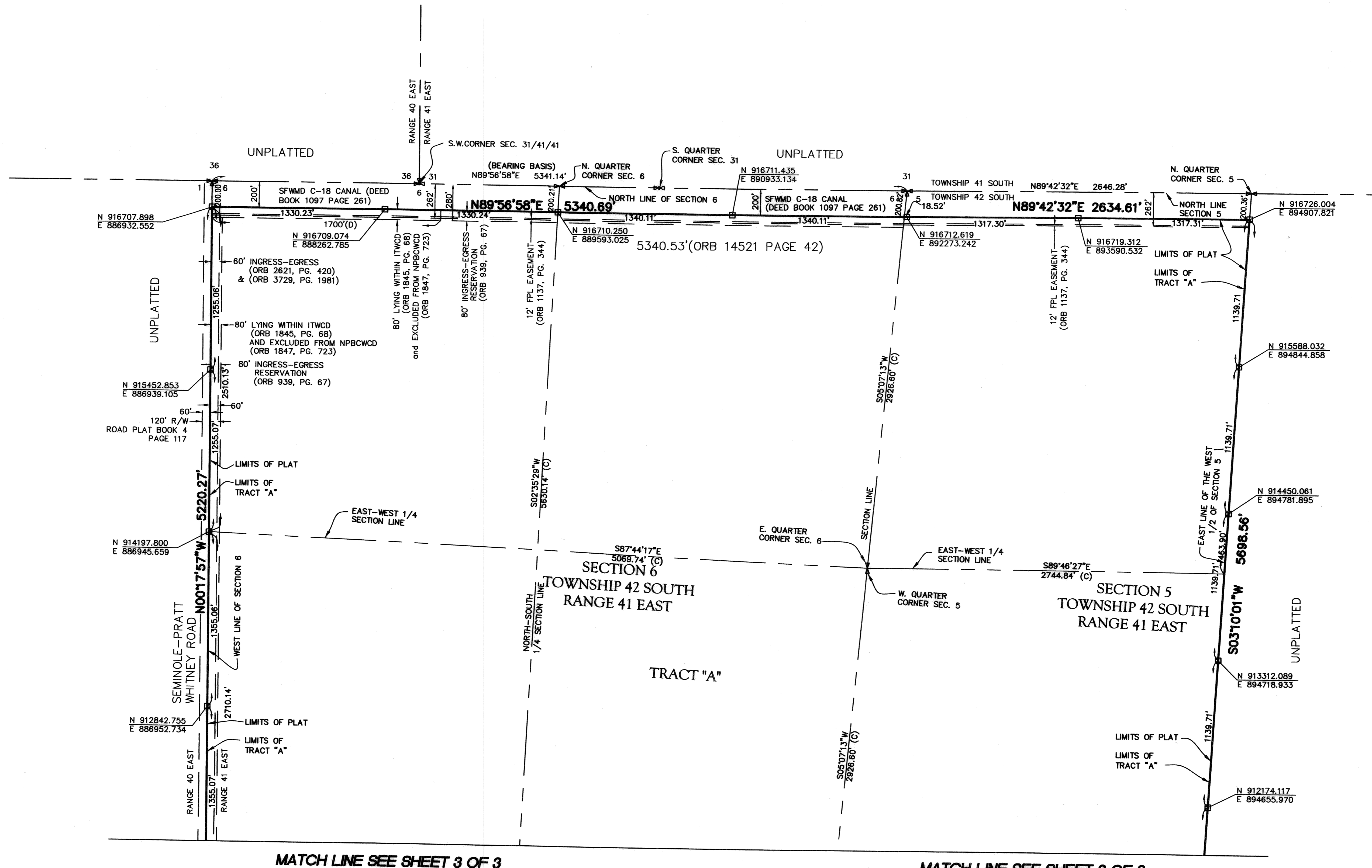
PALM BEACH COUNTY BIOTECHNOLOGY RESEARCH PARK

PORTION OF THE WEST ONE-HALF (W 1/2) OF SECTION 5, PORTION OF SECTION 6 ALL OF SECTION 7 AND THE WEST ONE-HALF (W 1/2) SECTION 8 TOWNSHIP 42 SOUTH, RANGE 41 EAST, PALM BEACH COUNTY, FLORIDA.

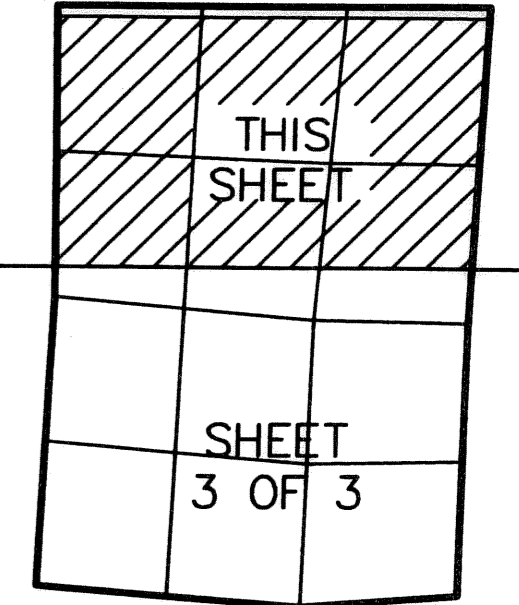
JULY 2004

SHEET 2 OF 3

109



- LEGEND:**
- FPL = FLORIDA POWER AND LIGHT
 - INC = INCORPORATED
 - ITWCD = INDIAN TRAILS WATER CONTROL DISTRICT
 - = DENOTES PERMANENT REFERENCE MONUMENT
 - LB 6680 (UNLESS OTHERWISE NOTED)
 - NPBCWCD = NORTHERN PALM BEACH COUNTY WATER CONTROL DISTRICT
 - ORB = OFFICIAL RECORD BOOK
 - PB = PLAT BOOK
 - PBC = PALM BEACH COUNTY
 - R/W = RIGHT-OF-WAY
 - RPB = ROAD PLAT BOOK
 - SFWM = SOUTH FLORIDA WATER MANAGEMENT DISTRICT
 - SEC. = SECTION
 - NPBCID = NORTHERN PALM BEACH COUNTY IMPROVEMENT DISTRICT



MAP SHEET INDEX
N.T.S.

SUBDIVISION Palm Beach County Biotechnology Research Park
 BOOK 109
 FLOOD ZONE b
 QUAD # 73
 TAZ 824
 FUD NAME

MATCH LINE SEE SHEET 3 OF 3

MATCH LINE SEE SHEET 3 OF 3

Engineers, Planners
 Land Surveyors
 Environmental
 Professionals
 License
 Business No. 6680
MILLER LEGG
 & ASSOCIATES, INC.
 2005 Vista Parkway
 Suite 100
 West Palm Beach
 Florida 33411-2719
 (561) 689-1138
 Fax: (561) 689-8108